

1.1
MassHunter
Overview

Std. Familiarization Time: 0:10:00
Approximate Video Time: 0:08:00

[Play the Video](#)

MassHunter Basics for Agilent ICP-MS
Rev.3.0.2 – February 2021
4

Standard configuration and options for Agilent 7900

opt.101 UHMI	opt.102 Advanced Acq.	Function	Typical Application
X		Ultra HMI (UHMI)	Environmental
X		Method automation	General
	X	TRA Data Acquisition, Fast TRA	Speciation
	X	Timechart data analysis	Research, Academic
	X	Half Mass, Narrow Peak	Research, Academic
	X	Isotope Ratio, Isotope Dilution analysis	Research, Academic
	X	Organic Solvent mode for Plasma Ignition	Organic solvent
	X	Support Option Gas line (20% O ₂ /Ar)	Organic solvent
	X	Support Laser Ablation as Sample Introduction	Laser Ablation
	X	Support 3 rd Cell gas line	Research, Academic

Standard configuration and options for Agilent 7800

Function	Typical Application
TRA Data Acquisition	Speciation
Timechart data analysis	Research, Academic
Half Mass, Narrow Peak	Research, Academic
Isotope Ratio, Isotope Dilution analysis	Research, Academic
Organic Solvent mode for Plasma Ignition	Organic solvent
Support Option Gas lin (20% O2/Ar)	Organic solvent
Support Laser Ablation as Sample Introduction	Laser Ablation
Support 3rd Cell gas line	Research, Academic

Starting the MassHunter Workstation

[ICP-MS Instrument Control]

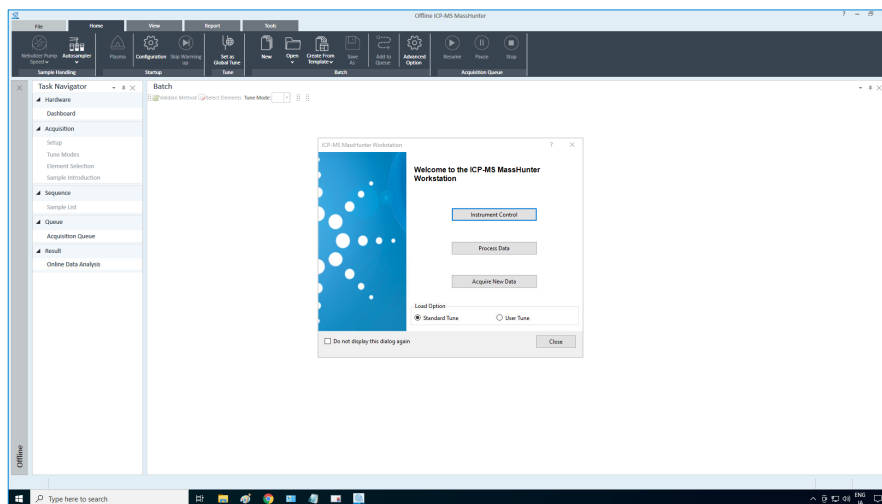
- [ICP-MS MassHunter Workstation] > [ICP-MS Instrument Control]

[Offline Data Analysis]

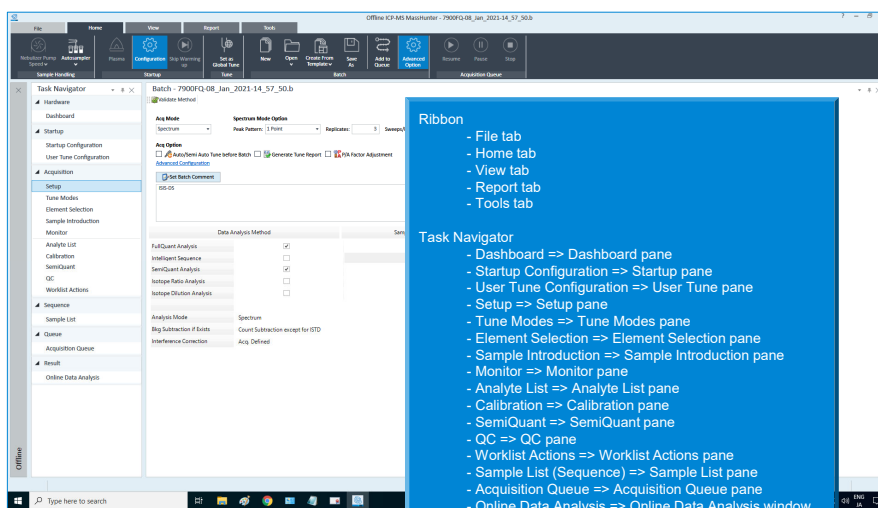
- [ICP-MS MassHunter Workstation] > [Offline Data Analysis]

or open from the desktop icons

Operations on the Welcome screen



Ribbon and Task Navigator



Use Auto Sampler

