



1.15

Maintenance and EMF

Std. Familiarization Time: 0:10:00

Approximate Video Time: 0:06:00

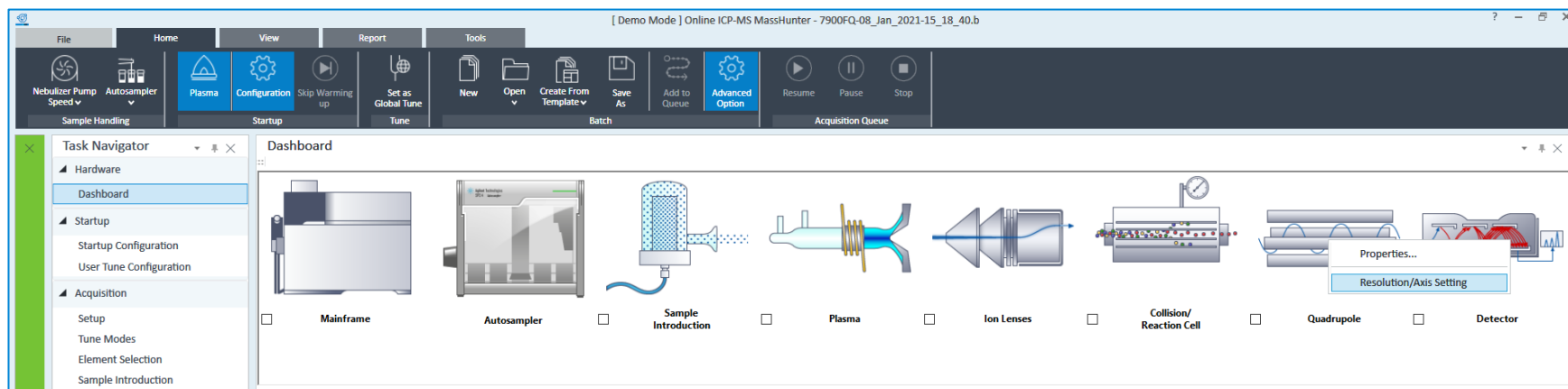
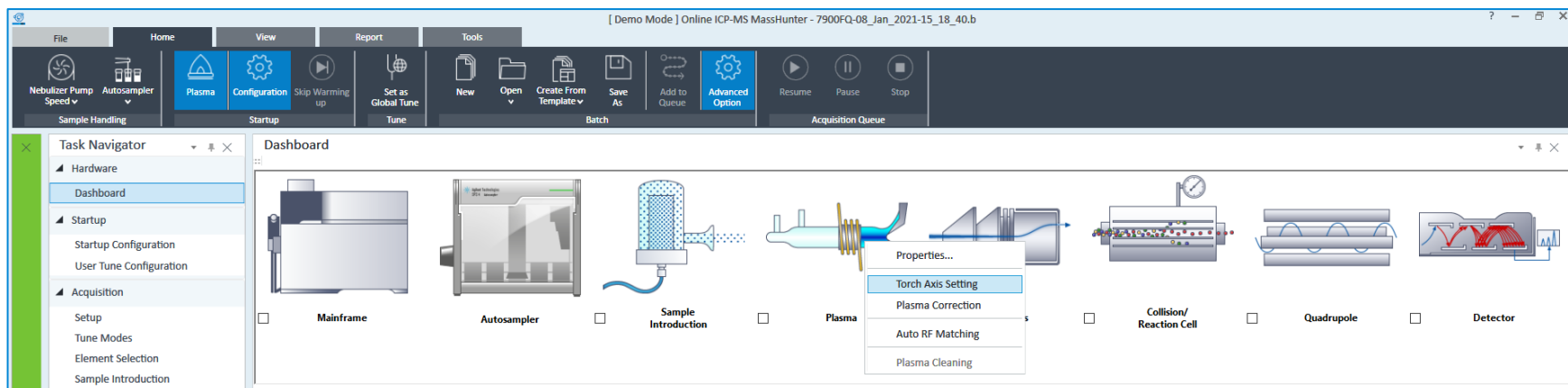
[Play the Video](#)

Maintenance

- Click icons in the Dashboard pane
- You can perform maintenance items from the maintenance menu



Maintenance



Early Maintenance Feedback

The screenshot displays the Agilent MassHunter software interface in Demo Mode. The top menu bar includes File, Home, View, Report, and Tools. The Home tab is active, showing icons for Sample Handling, Startup, and Acquisition Queue. The Task Navigator on the left lists various functions like Hardware, Dashboard, Startup, Acquisition, Sequence, Queue, and Result. The main Dashboard area shows a schematic of the instrument components: Mainframe, Autosampler, Sample Introduction, Plasma, Ion Lenses, Collision/Reaction Cell, Quadrupole, and Detector. Below this, the 'Early Maintenance Feedback' section is visible, containing 'User Maintenance Counters' and 'Instrument Counters'.

Early Maintenance Feedback

User Maintenance Counters

| Counter | Value | Reset |
|---------------------------|----------------------------|-------|
| Check Foreline Pump Oil | Vacuum ON Days: 5/80 | Reset |
| Change Foreline Pump Oil | Vacuum ON Days: 6/180 | Reset |
| Change Sample Uptake Tube | Solutions Measured: 10/200 | Reset |
| Clean Sampling Cone | Solutions Measured: 10/200 | Reset |
| Clean Skimmer Cone | Solutions Measured: 10/200 | Reset |
| Change Oil Mist Filter | Vacuum ON Days: 6/360 | Reset |

Instrument Counters

| Counter | Value |
|--------------------|-------|
| Power ON Days | 21 |
| Plasma ON Days | 21 |
| Foreline Pump Days | 21 |
| Turbo Pump Days | 21 |
| Solutions Measured | 10 |

1/8/2021 4:05:41 PM 3004, Power cycling was detected.

Set Early Maintenance Feedback

The screenshot displays the Agilent MassHunter software interface in 'Demo Mode'. The main window is titled '[Demo Mode] Online ICP-MS MassHunter - 7900FQ-08_Jan_2021-15_18_40.b'. The interface includes a top menu bar (File, Home, View, Report, Tools) and a toolbar with icons for various functions like 'Nebulizer Pump Speed', 'Autosampler', 'Plasma', 'Configuration', 'Skip Warming up', 'Set as Global Tune', 'Tune', 'New', 'Open', 'Create From Template', 'Save As', 'Add to Queue', 'Advanced Option', 'Resume', 'Pause', and 'Stop'. A 'Task Navigator' on the left lists categories like Hardware, Startup, Acquisition, Sequence, Queue, and Result. The 'Dashboard' on the right shows a 'Mainframe' and 'Early Maintenance Feedback' section with progress bars for 'Check Foreline Pump Oil', 'Vacuum ON Days: 5/80', 'Clean Skimmer Cone', and 'Solutions Measured: 10/200'. The 'Set Early Maintenance Feedback' dialog box is open, showing a table of maintenance checks. The 'Vacuum' tab is selected, and the table lists checks with their current and limit values. The 'Instrument Counters' section on the right shows values for Power ON Days, Plasma ON Days, Foreline Pump Days, Turbo Pump Days, and Solutions Measured. The status bar at the bottom indicates 'Analysis' and shows a warning message: '1/8/2021 4:05:41 PM 3004, Power cycling was detected.'

Task Navigator

- Hardware
 - Dashboard
- Startup
 - Startup Configuration
 - User Tune Configuration
- Acquisition
 - Setup
 - Tune Modes
 - Element Selection
 - Sample Introduction
 - Monitor
 - Worklist Actions
- Sequence
 - Sample List
- Queue
 - Acquisition Queue
- Result
 - Online Data Analysis

Dashboard

Mainframe

Early Maintenance Feedback

User Maintenance Counters

Check Foreline Pump Oil

Vacuum ON Days: 5/80

Clean Skimmer Cone

Solutions Measured: 10/200

Set Early Maintenance Feedback

Vacuum Plasma Solutions Measured Time Elapsed Others Instrument Counters

Unit: Days

| Check | Title | Current Value | Limit Value | Reset |
|-------------------------------------|--------------------------|---------------|-------------|-------|
| <input checked="" type="checkbox"/> | Check Foreline Pump Oil | 5 | 80 | Reset |
| <input checked="" type="checkbox"/> | Change Foreline Pump Oil | 6 | 180 | Reset |
| <input checked="" type="checkbox"/> | Change Oil Mist Filter | 6 | 360 | Reset |
| <input type="checkbox"/> | User defined 1 | 6 | 0 | Reset |
| <input type="checkbox"/> | User defined 2 | 7 | 0 | Reset |

Pop-up EMF: ☒ Plasma Ignition ☒ Queue End

OK Cancel

Instrument Counters

Power ON Days 21

Plasma ON Days 21

Foreline Pump Days 21

Turbo Pump Days 21

Solutions Measured 10

Reset

1/8/2021 4:05:41 PM 3004, Power cycling was detected.