



1.1 MassHunter Overview

Std. Familiarization Time: 0:10:00

Approximate Video Time: 0:08:00

[Play the Video](#)

Standard configuration and options for Agilent 7900

opt.101 UHMI	opt.102 Advanced Acq.	Function	Typical Application
X		Ultra HMI (UHMI)	Environmental
X		Method automation	General
	X	TRA Data Acquisition, Fast TRA	Speciation
	X	Timechart data analysis	Research, Academic
	X	Half Mass, Narrow Peak	Research, Academic
	X	Isotope Ratio, Isotope Dilution analysis	Research, Academic
	X	Organic Solvent mode for Plasma Ignition	Organic solvent
	X	Support Option Gas line (20% O2/Ar)	Organic solvent
	X	Support Laser Ablation as Sample Introduction	Laser Ablation
	X	Support 3 rd Cell gas line	Research, Academic



Standard configuration and options for Agilent 7800

Function	Typical Application
TRA Data Acquisition	Speciation
Timechart data analysis	Research, Academic
Half Mass, Narrow Peak	Research, Academic
Isotope Ratio, Isotope Dilution analysis	Research, Academic
Organic Solvent mode for Plasma Ignition	Organic solvent
Support Option Gas lin (20% O2/Ar)	Organic solvent
Support Laser Ablation as Sample Introduction	Laser Ablation
Support 3rd Cell gas line	Research, Academic

Starting the MassHunter Workstation

[ICP-MS Instrument Control]

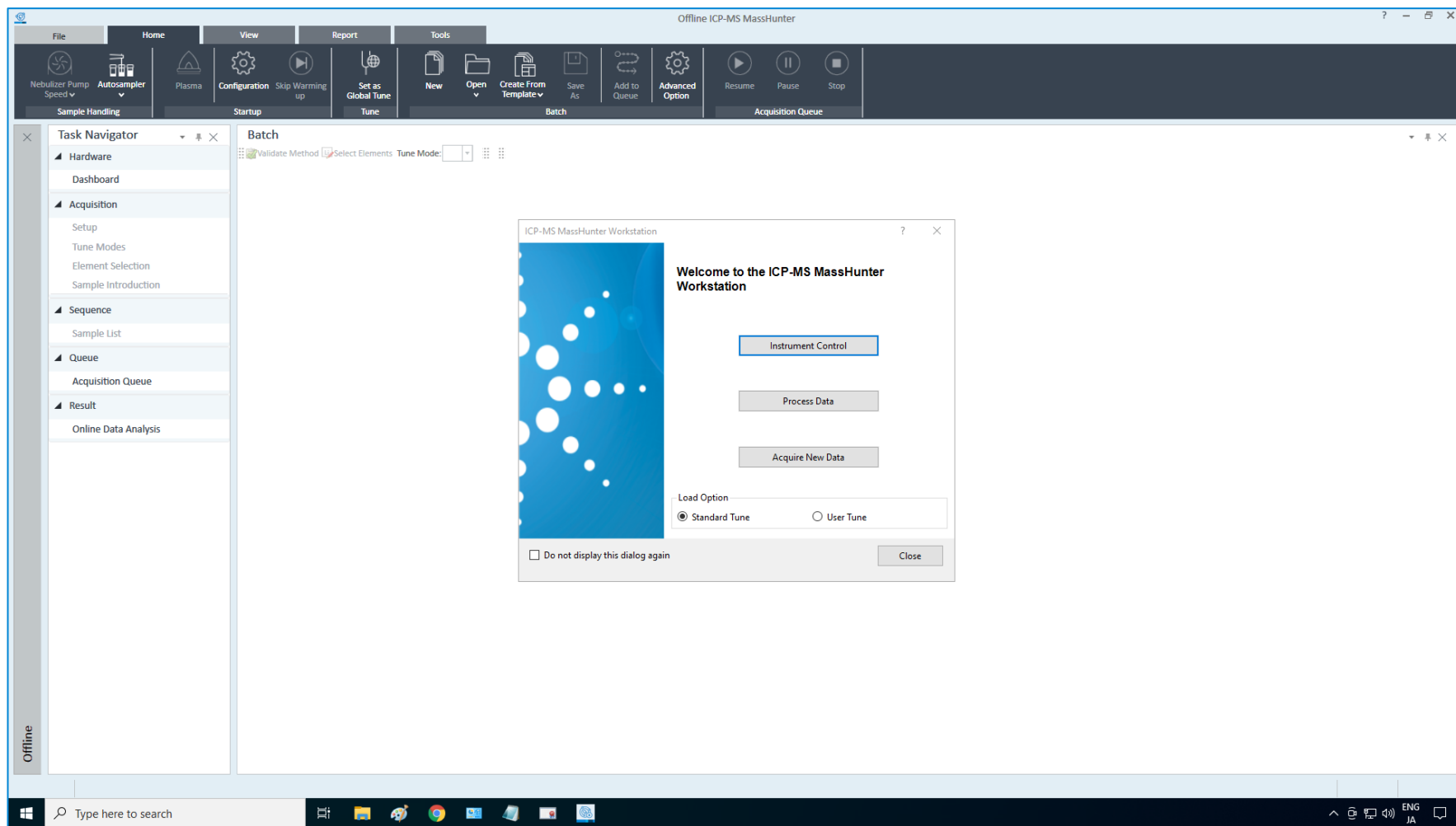
- [ICP-MS MassHunter Workstation] > [ICP-MS Instrument Control]

[Offline Data Analysis]

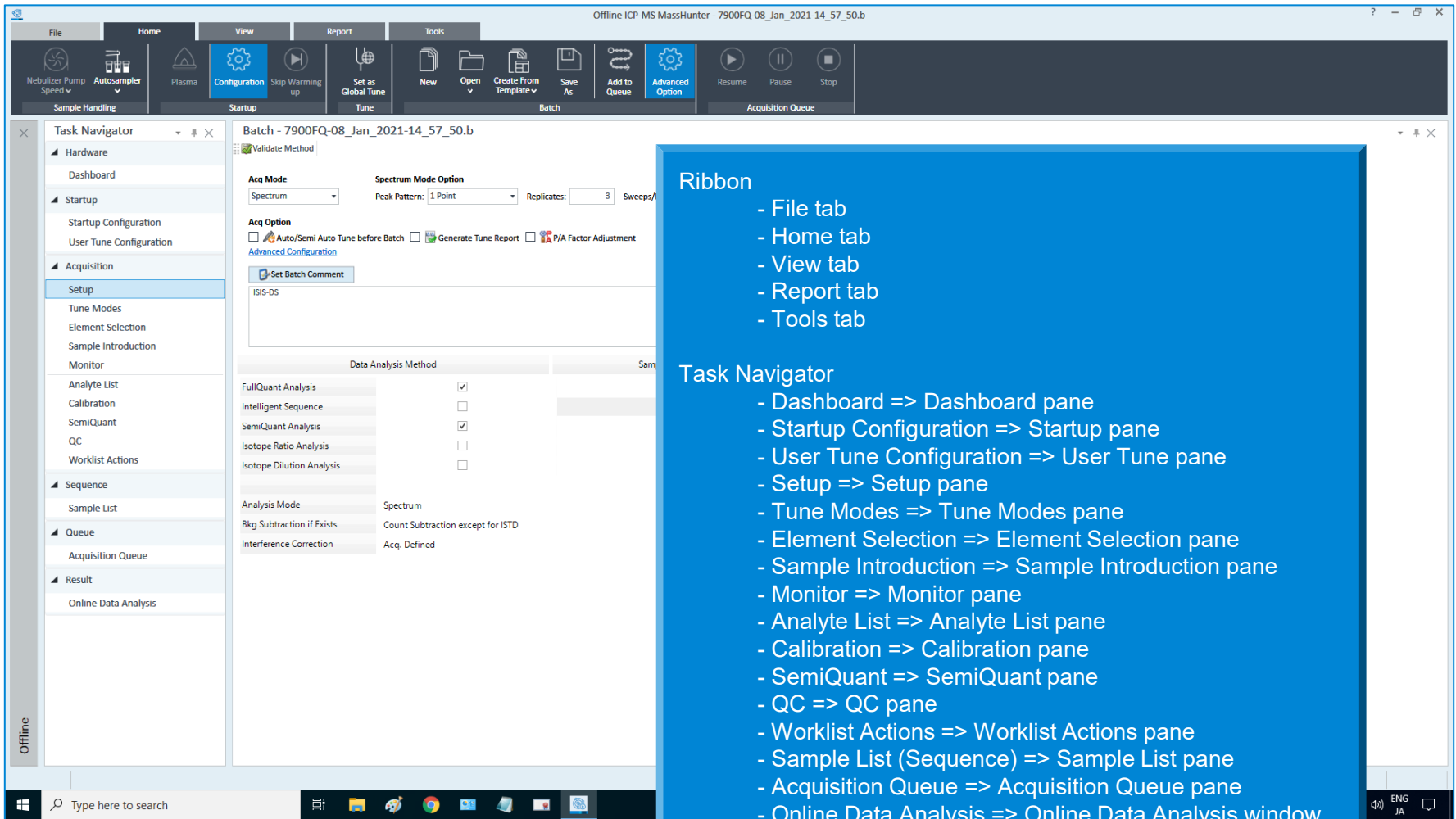
- [ICP-MS MassHunter Workstation] > [Offline Data Analysis]

or open from the desktop icons

Operations on the Welcome screen



Ribbon and Task Navigator



The screenshot displays the Agilent MassHunter software interface. The top ribbon contains tabs for File, Home, View, Report, and Tools. The Task Navigator on the left lists various tasks, with 'Setup' selected. The main workspace shows the 'Batch - 7900FQ-08_Jan_2021-14_57_50.b' configuration, including 'Acq Mode' (Spectrum), 'Spectrum Mode Option' (Peak Pattern: 1 Point, Replicates: 3, Sweeps: 4), and 'Acq Option' (Auto/Semi Auto Tune before Batch, Generate Tune Report, P/A Factor Adjustment). The 'Data Analysis Method' table is also visible.

Ribbon

- File tab
- Home tab
- View tab
- Report tab
- Tools tab

Task Navigator

- Dashboard => Dashboard pane
- Startup Configuration => Startup pane
- User Tune Configuration => User Tune pane
- Setup => Setup pane
- Tune Modes => Tune Modes pane
- Element Selection => Element Selection pane
- Sample Introduction => Sample Introduction pane
- Monitor => Monitor pane
- Analyte List => Analyte List pane
- Calibration => Calibration pane
- SemiQuant => SemiQuant pane
- QC => QC pane
- Worklist Actions => Worklist Actions pane
- Sample List (Sequence) => Sample List pane
- Acquisition Queue => Acquisition Queue pane
- Result
- Online Data Analysis => Online Data Analysis window

Use Auto Sampler

Offline ICP-MS MassHunter - 7900FQ-08_Jan_2021-15_18_40.b

File Home View Report Tools

Settings Offline Data Analysis Actions Archive

Settings DA Script Batch Archive

Task Navigator

- Hardware
- Dashboard
- Startup
 - Startup Configuration
 - User Tune Configuration
- Acquisition
 - Setup
 - Tune Modes
 - Element Selection
 - Sample Introduction
 - Monitor
- Analyte List
- Calibration
- SemiQuant
- QC
- Worklist Actions
- Sequence
 - Sample List
- Queue
 - Acquisition Queue
- Result
 - Online Data Analysis

Batch - 7900FQ-08_Jan_2021-15_18_40.b

Validate Method

Acq Mode Spectrum Spectrum Mode O Peak Pattern: 1 P

Acq Option

☐ Auto/Semi Auto Tune before Batch ☐ G

Advanced Configuration

Set Batch Comment

ISIS-DS

Data Analysis Method

FullQuant Analysis

Intelligent Sequence

SemiQuant Analysis

Isotope Ratio Analysis

Isotope Dilution Analysis

Analysis Mode Spectrum

Bkg Subtraction if Exists Count Subtract

Interference Correction Acq. Defined

Hardware

Settings

Mainframe

Sample Introduction

Properties

Sample Intro

Configure Autosampler

Type Rack COM Port Probe Depth Advanced

Autosampler Type:

- SPS 4
- ASX-520
- Agilent I-AS
- EXR-8/XLR-860
- ASX-110
- SPS 4

Select the Autosampler Type

OK Cancel

Nebulizer Test

Maintenance

Sample Introduction Maintenance

SPS 4 Maintenance Mode

Close

Offline

Type here to search

ENG JA