



1.4

Performance Report

Std. Familiarization Time: 0:05:00

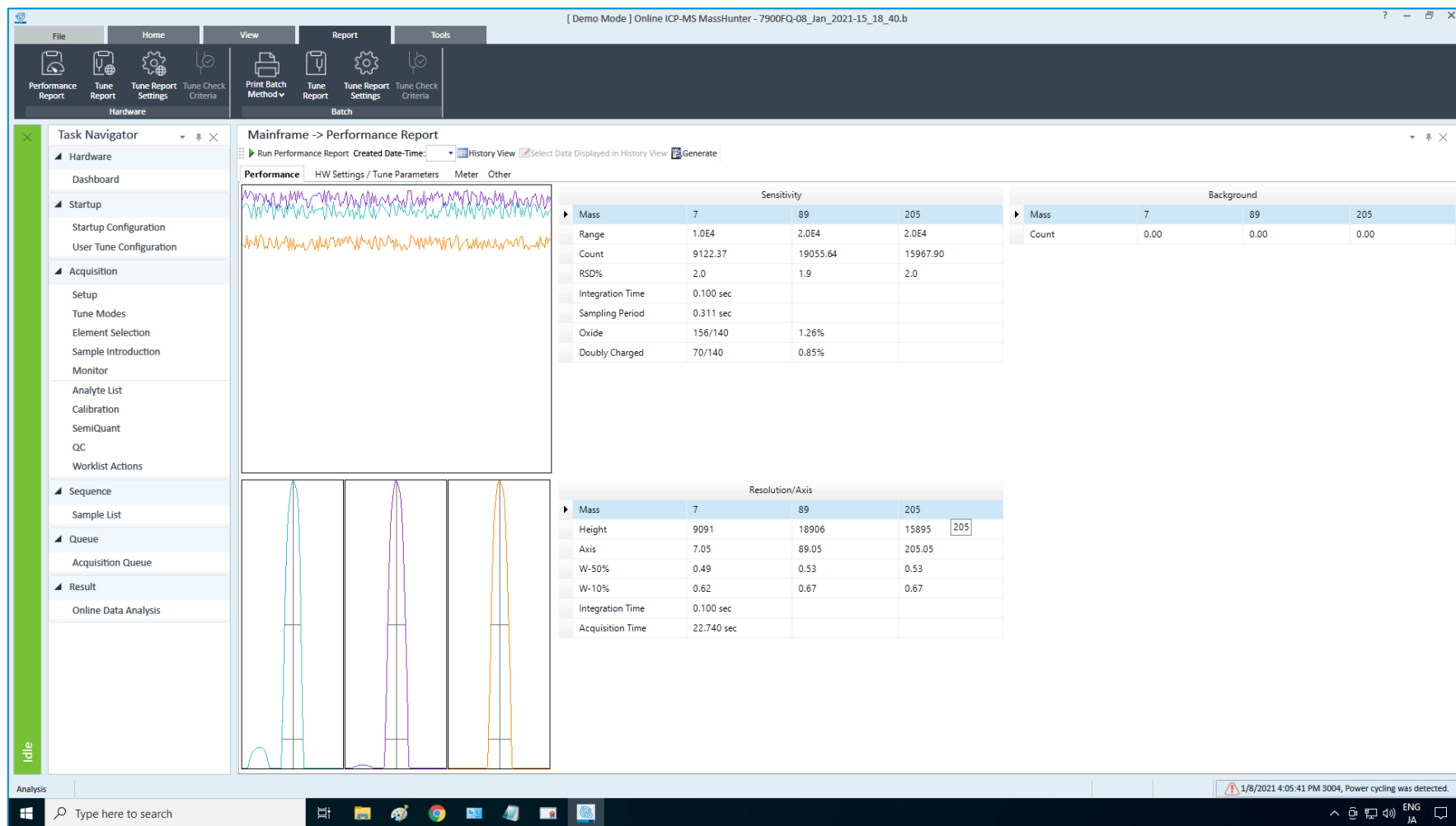
Approximate Video Time: 0:02:30

[Play the Video](#)

Performance Report

- Normally, the Performance Report runs at Startup
- You can monitor the status of the device status successively by executing this every time using the same conditions
- Ribbon > [Report] tab > [Performance Report]

Performance Report



Others

- [History View]
- [Select Data Displayed in History View]
- [Export] (Context Menu)
- [Clear Performance Report History]

